



Specification Sheet

Reverse Units

Description

Wildcat Oil Tools' variety of pumps give you the specific equipment you need for competition drilling and fishing operations. Our pumps are equipped with API certified hoses, 15k iron and manifolds, along with calibrated flow meters.

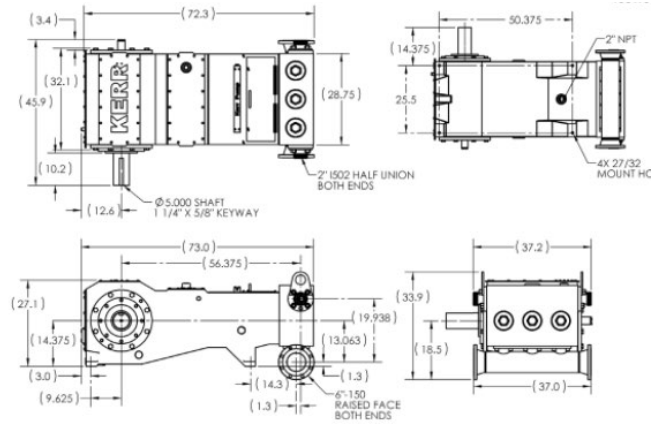
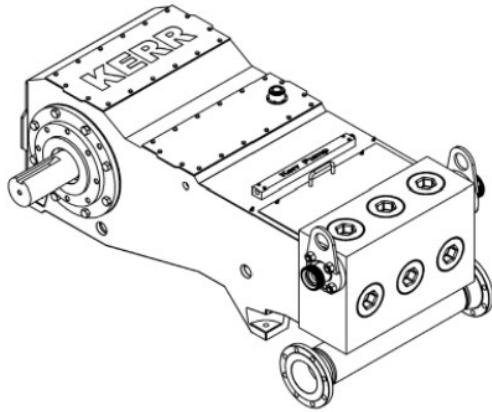


Model	Pressure Rating	Horsepower	Plunger Size	Spec Sheets
GD-1000Q Quintuplex	15,000 lbs	1,000	3"	Spec Sheet
GD-1000Q Quintuplex	15,000 lbs	800	3"	Spec Chart
GD-1000Q Quintuplex	15,000 lbs	600	3"	Spec Chart
Triplex	10,000 lbs	600	3.5"	Spec Sheet & LINK TO SLIDE 3
340 National Pump	5,000 lbs	375	4.5"	LINK TO SLIDE 4
TEE	5,000 lbs	300	4"	LINK TO SLIDE 5



Specification Sheet T60WS

600 BHP Triplex Plunger Pump
Well Service Duty



SPECIFICATION

Configuration	Horizontal Triplex Plunger
Number of Plungers	3
Stroke Length	6" / 152 mm
Frame Load Rating	84,825 lbs
Fluid Cylinder Pressure Rating	12,000 PSI
Pump Weight (Avg.)	5400 lbs / 2449 kilos
Kerr Max Speed	375 RPM
Minimum Speed	50 RPM
Mechanical Efficiency (Bare Shaft)	90%
Lube System (Standard)	Splash - Pressure Feed
Lube System (Optional)	Force Feed
Lube Oil Capacity	25 gallons / 94.6 liters
Lube Oil Type	Petroleum per AGMA SEP (ISO 220) or Synthetic per SAE 75W-90 (ISO 100)
Connection Sizes	6" ANSI CL ISO RF 2" FIG 1502 FEM

FLUID END

Forged Alloy Steel (4140 HT)

Forged Stainless Steel (17-4 PH)

PLUNGERS

Colmonoy 730 Hard Coat

Black Gold

VALVES

WING GUIDED INSERT WITH

O-RING TAPER

	Plunger Only	Plunger & Piston	Plunger & Piston	Plunger & Piston (3)
Diameter(in)	3.000	3.500	4.000	4.500
Gal / Min per RPM	0.5508	0.7947	0.9792	1.2393
Bbl / Min per RPM	0.0131	0.0178	0.0233	0.0295

375	600	4232	207	4.9	3109	281	6.7	2381	367	8.7	1881	465	11.1
350	600	4534	193	4.6	3331	262	6.2	2551	343	8.2	2015	434	10.3
300	600	5290	165	3.9	3887	225	5.4	2967	294	7.0	2351	372	8.9
275	600	5771	151	3.6	4240	206	4.9	3246	269	6.4	2565	341	8.1
250	600	6348	138	3.3	4664	187	4.5	3571	245	5.8	2821	310	7.4
225	600	7054	124	3.0	5182	169	4.0	3968	220	5.2	3135	279	6.6
150	600	10580	82.6	2.0	7773	112	2.7	5951	147	3.5	4702	186	4.4
100	453	11982	55.1	1.3	8803	75.0	1.8	6740	97.9	2.3	5325	124	3.0
75	340	11991	41.3	1.0	8810	56.2	1.3	6745	73.4	1.7	5329	92.9	2.2
50	227	12000	27.5	0.7	8817	37.5	0.9	6750	49.0	1.2	5333	62.0	1.5



Specification Sheet

JWS-340

Triplex Intermittent Duty

Pumps are appropriate for high-pressure, high horsepower, operations. This includes applications such as reverse circulation, well killing, acidizing, cementing, sand fracturing, and horizontal directional drilling

Field Connections in.

Pump Model	Discharge Connection Size	Suction Connection Size
JWS-340	2-1/16" API-10,000# RTJ	6" Std Pipe



Dimensions

Pump Type	Length	Width	Height
JWS-340	68-1/16"	55-1/2"	22-7/8"

Pump Size (Max. Plunger Diameter x Stroke) in. (mm)	4x5 (102x127)
Rated BHP At 450 RPM (Kw)	340 (253.5)
Maximum Working Pressure: PSI(kPa)	10,000 (68,947.68)
Stroke Length, in. (mm)	5 (127)
Maximum Speed, rpm	450
Maximum Plunger size, in. (mm)	4 (101.6)
Maximum Piston size, in. (mm)	4 1/2 (114.3)
Crankshaft Extension: in. (mm)	
Diameter	4-7/8 (123.8)
Length	11-3/4 (298.0)
Keyway (Width x Depth)	1-1/4 x 5/8 (32 x 16)
Pinion Shaft Extension, if gear unit supplied (mm)	
Belt Or Chain Drive- Diameter	3 1/2 (88.9)
Belt Or Chain Drive- Length	5-3/4 (146)
Belt Or Chain Drive- Keyway (Width x Depth)	7/18 x 7/16 (22.2 x 11.1)
Direct Drive- Diameter	3-1/2 (88.9)
Direct Drive- Length	5-3/4 (146)
Belt Or Chain Drive- Keyway (Width x Depth)	7/18 x 7/16 (22.2 x 11.1)
Oil Capacity: Gallons (L)	
Crankcase	8(30)
Gear Unit (Varies with Ratio)	3-1/2 to 6-1/2 (13.2 to 24.6)
Weight: Pump Only On Wood Shipping Skids - Lbs. (Kg)	5,200 (2,359)
Gear Unit = LS. (Kg)	1,100 (499)

Standard Equipment

- Forged Steel Fluid End
- Forged Steel Valve Covers
- Pistons & Liners
- Or Plungers & Packing
- Stainless Steel Extension Rods
- Slush-Type Valves
- Double Extended Crankshaft
- Oil Level Dipstick
- Crankcase Breather

Accessories

- Bolt On Style Gear Reducers:
 - 2.27:1 Ratio
 - 2.89:1 Ratio
 - 3.25:1 Ratio
 - 4.38:1 Ratio
 - 4.84:1 Ratio

- Plunger Lubricator
- Suction Stabilizer
- Discharge Dampener
- Liner Flush System
- Relief Valves:
- Valve Service Kit
- Complete Unitization Services

Quick Maintenance Features

- Horizontal Design
- + Large Power End Covers
- + Easy Bearing Access
- + Separate Crosshead/Plunger Construction
- + Open Frame Construction
- + Removable Stuffing Boxes



Specification Sheet JWS-340

Triplex Intermittent Duty

Performance Data

English Units

Plunger/ Piston* Dia. In.	Area Inches Squared	Gallon Per RPM	25 RPM		50 RPM		100 RPM		200 RPM		225 RPM		250 RPM		300 RPM		350 RPM		400 RPM		450 RPM	
			PSI	GPM	PSI	GPM	PSI	GPM	PSI	GPM	PSI	GPM	PSI	GPM	PSI	GPM	PSI	GPM	PSI	GPM	PSI	GPM
2 3/4	5.9396	0.3857	10,000	9.64	10,000	19.28	10,000	38.57	6800	77.14	6,040	86.78	5,440	96.42	4,530	115.71	3,890	134.99	3,400	154.28	3,020	173.56
3 1/2	9.6212	0.6248	6,220	15.62	6,220	31.24	6,220	62.48	4200	124.95	3,730	140.57	3,360	156.19	2,800	187.43	2,400	218.66	2,100	249.90	1,870	281.14
4	12.5664	0.8160	4,760	20.40	4,760	40.80	4,760	81.60	3120	163.20	2,860	183.60	2,570	204.00	2,140	244.80	1,840	285.60	1,610	326.40	1,430	367.20
4 1/2	15.9044	1.03275	3,760	25.82	3,760	51.64	3,760	103.28	2540	206.55	2,260	232.37	N/A	N/A	N/A	N/A	N/A	N/A	N/A	N/A	N/A	N/A
Brake Horsepower Required			63		126		252		340		340		340		340		340		340		340	

* 4-1/2 Available with Piston Only

Metric Units

Plunger/ Piston* Dia. In.	Area Centi- meters Squared	Liter Per RPM	25 RPM		50 RPM		100 RPM		200 RPM		225 RPM		250 RPM		300 RPM		350 RPM		400 RPM		450 RPM	
			kPa	LMin	kPa	LMin	kPa	LMin	kPa	LMin	kPa	LMin	kPa	LMin	kPa	LMin	kPa	LMin	kPa	LMin	kPa	LMin
70	57.29	1,460	68,950	36.50	68,950	72.99	68,950	145.98	46,886	291.97	41,646	328.46	37,509	364.96	31,234	437.95	26,822	510.94	23,443	583.93	20,823	656.92
89	92.80	2,365	42,887	59.12	42,887	118.23	42,887	236.47	28,959	472.94	25,718	532.05	23,167	591.17	19,306	709.40	116,548	827.64	14,480	945.87	12,894	1,064.11
102	121.20	3,089	32,820	77.21	32,820	154.43	32,820	308.86	22,133	617.71	19,710	694.93	17,720	772.14	14,755	926.57	12,687	1,081.00	11,101	1,235.42	9,860	1,389.85
114	153.40	3,909	25,925	97.72	25,925	195.45	25,925	390.90	17,513	781.79	15,583	879.52	N/A	N/A	N/A	N/A	N/A	N/A	N/A	N/A	N/A	N/A
Kilowatts Required			47		94		188		254		254		254		254		254		254		254	

* 114 mm Available with Piston Only.

Horsepower and Kilowatts required are based on 90% mechanical efficiency and 100% volumetric efficiency.

Intermittent Duty Ratings:

These ratings are for intermittent service. Pressures as shown may be utilized for a period not to exceed 30 minutes followed by an equal period at no load, but not to exceed 4 hours in a 24 hour period.

Pressure Limitations, Caution:

When pump is equipped with pistons and liners, pressures in excess of 5,000 psi (34,475 kPa) should not be exceeded except for emergencies or intermittent duty of short duration.

Speed Limitations:

Speed in excess of 225 RPM is not recommended on JWS-340 pumps for maximum liner and piston life.

Charge Pump:

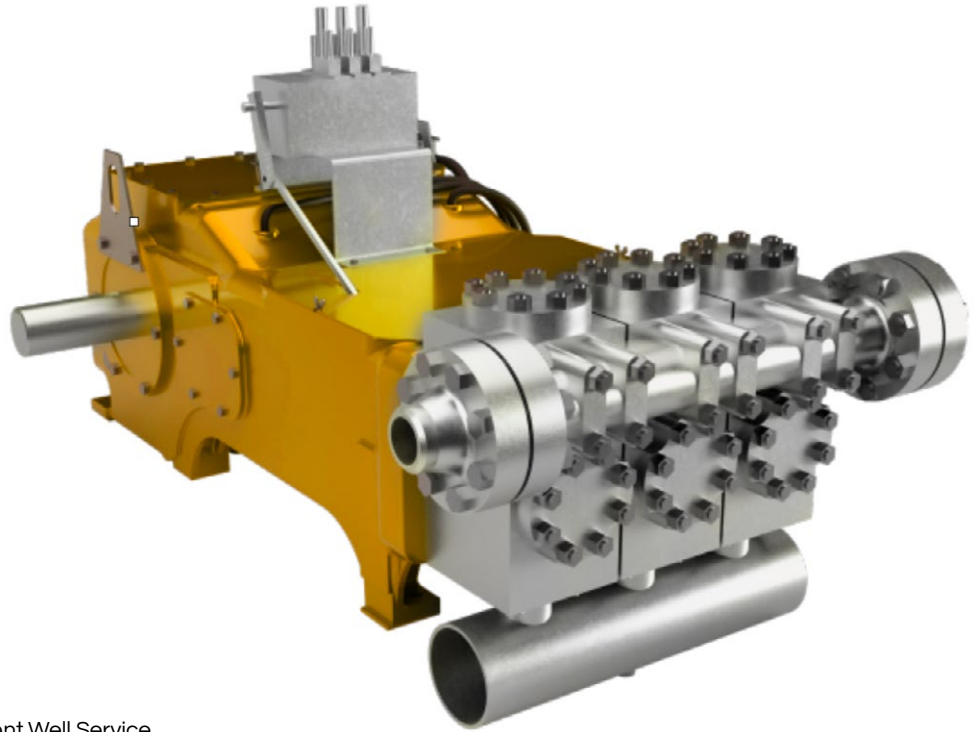
A suction system charge pump is recommended for best operation. The charge pump should be capable of delivering 1-1/2 times the maximum discharge flow rate of the reciprocating pump.



Specification Sheet

TEED TRIPLEX

Triplex Intermittent Duty



SPECIFICATION

Specifications	Intermittent Well Service
Maximum	165 BPH
Maximum Jackshift RPM	300RPM
Stroke Length	5" (203 mm)
Maximum Rod Load	12 gal. (45 liters)
Pump Weight	44,000 lbs. (19,960 kg)

Plunger Diameter	Displacement per revolution		DISPLACEMENT AT PUMP RPM - WELL SERVICE APPLICATION																				
			50				100				200				250				300				
			Gal/Rev	Lit/Rev	GPM	LPM	PSI	kg/sq.cm	GPM	LPM	PSI	kg/sq.cm	GPM	LPM	PSI	kg/sq.cm	GPM	LPM	PSI	kg/sq.cm	GPM	LPM	PSI
4.00	102	0.817	3.091	41	155	3500	246	82	309	2950	206	163	618	1475	104	204	773	1175	83	245	927	975	69
3.50	89	0.623	2.359	31	118	4600	321	62	236	3800	258	125	472	1925	135	156	590	1550	108	187	708	1300	90
3.00	76	0.460	1.741	23	87	6200	438	46	174	5250	368	92	348	2626	184	115	435	2100	147	138	522	1750	123
2.75	70	0.387	1.463	19	73	7400	521	39	46	6150	433	77	293	3125	220	97	366	2500	176	116	439	2075	146
2.50	63	0.319	1.206	16	60	9000	630	32	121	7550	532	64	241	3775	265	80	302	3025	212	96	362	2525	177
2.25	57	0.258	0.977	13	49	10000	703	26	98	9300	655	52	195	4650	328	65	244	3725	262	77	293	3100	218
2.00	51	0.204	0.722	10	39	10000	703	20	77	10000	703	41	154	5900	414	51	193	4725	332	61	232	3925	276
1.75	44	0.156	0.591	8	30	10000	719	16	59	10000	703	31	118	7700	542	39	148	6175	433	47	177	5125	360

Ratings are based on 90% mechanical efficiency and 100% volumetric efficiency.

Piston and liner construction available in 2 3/4", 3", 3 1/2" and 4" only.

The duty cycle of a pump rated for intermittent duty is not to exceed 30 minutes at loads above the maximum established for continuous running followed by an equal period at no load.

External pressure lubrication required below 75 RPM.

Note: Use plungers/packing for acid service or pressures in excess of 4,000 PSI. Pistons/liners are not recommended for these applications or any applications over 4,000 PSI.



Specification Sheet

Reverse Units

